

Project Summary

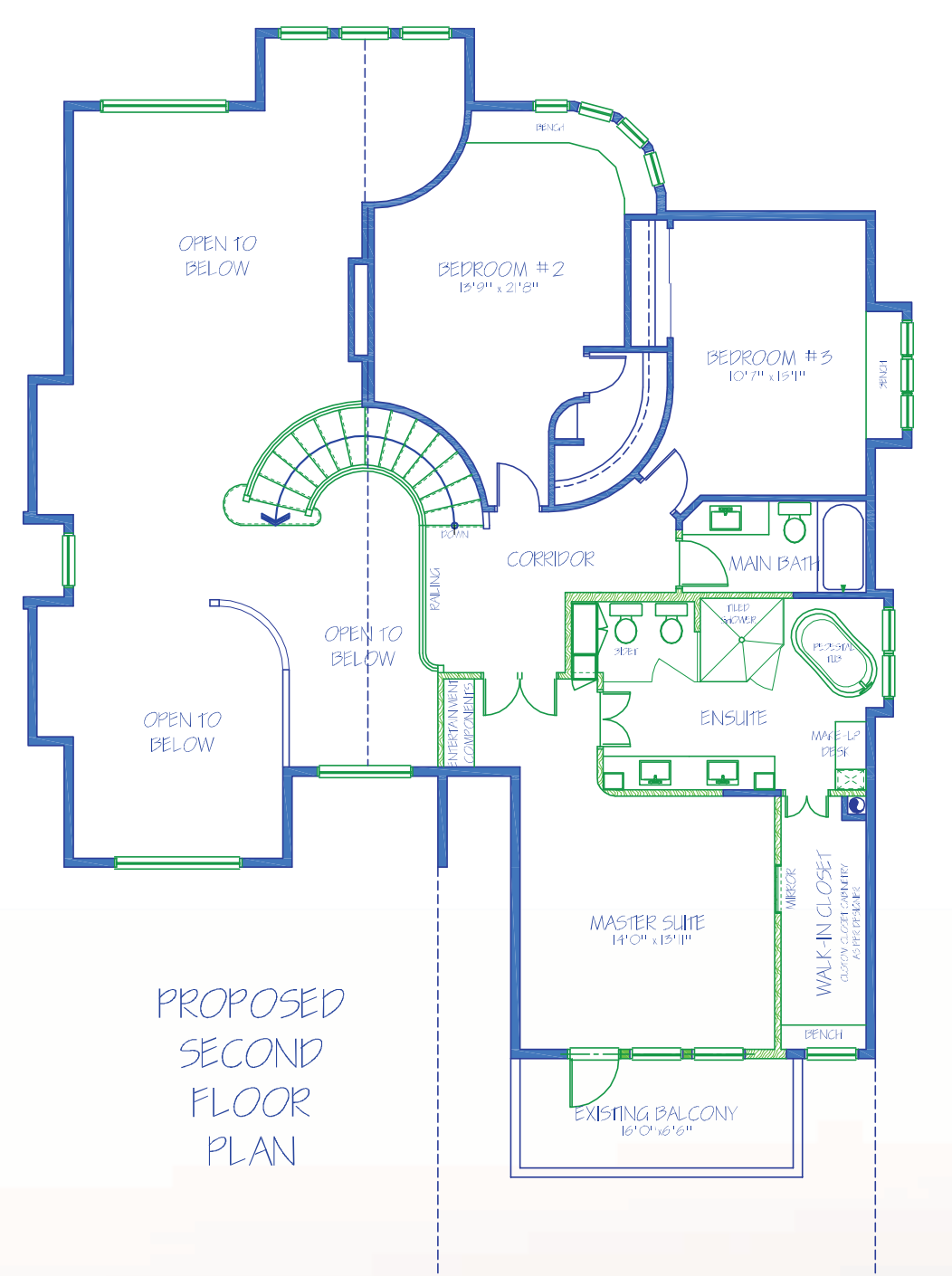
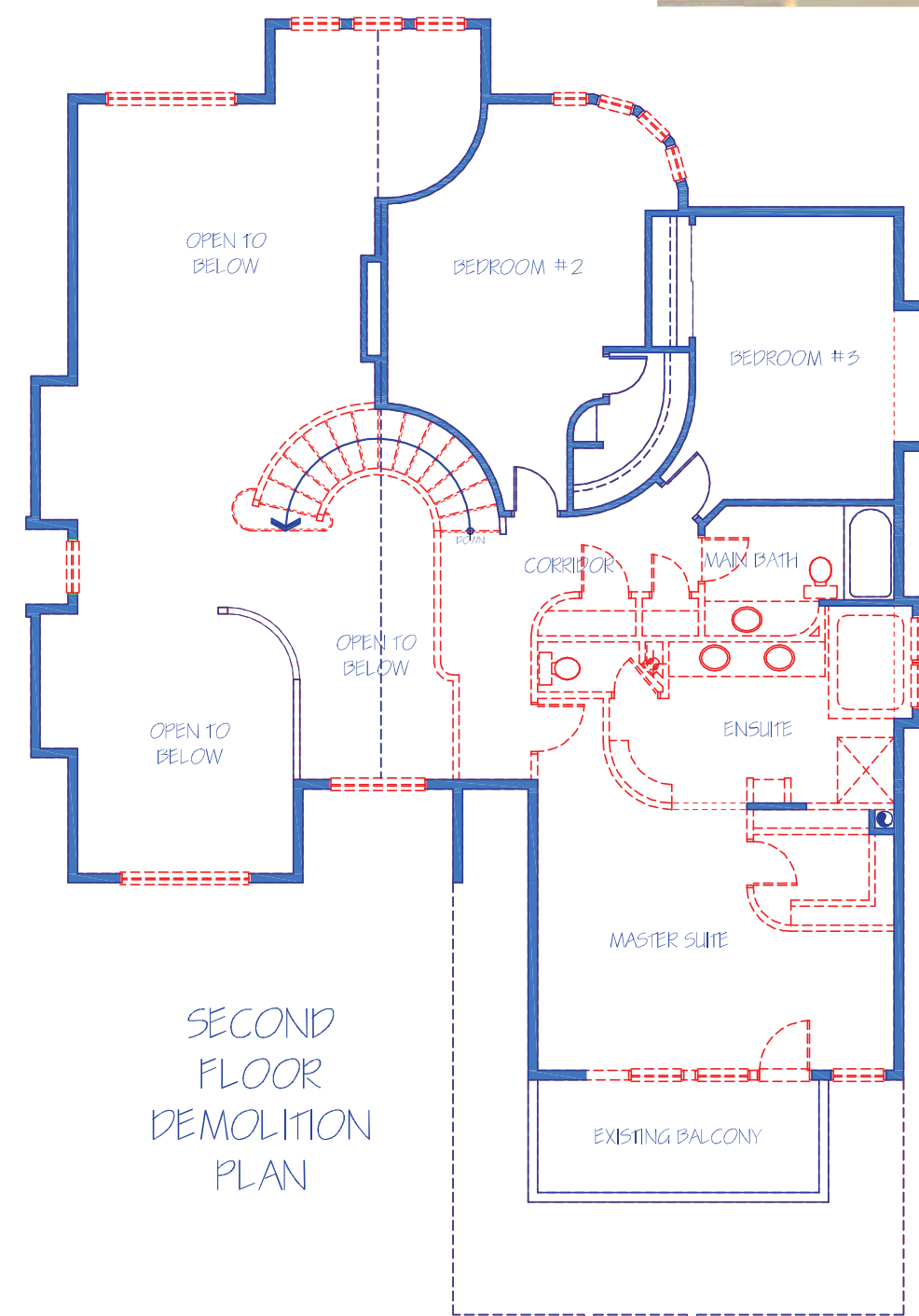
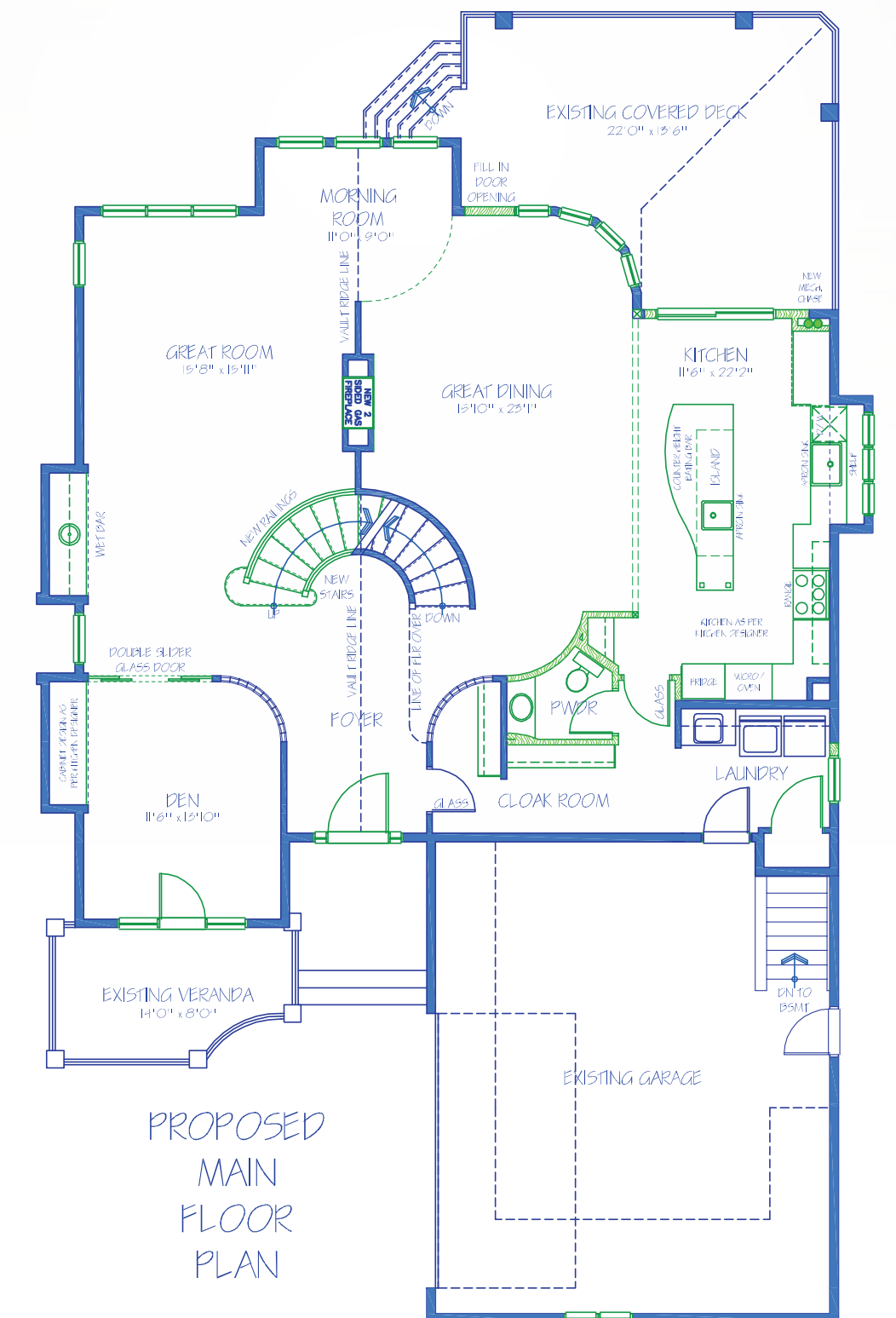
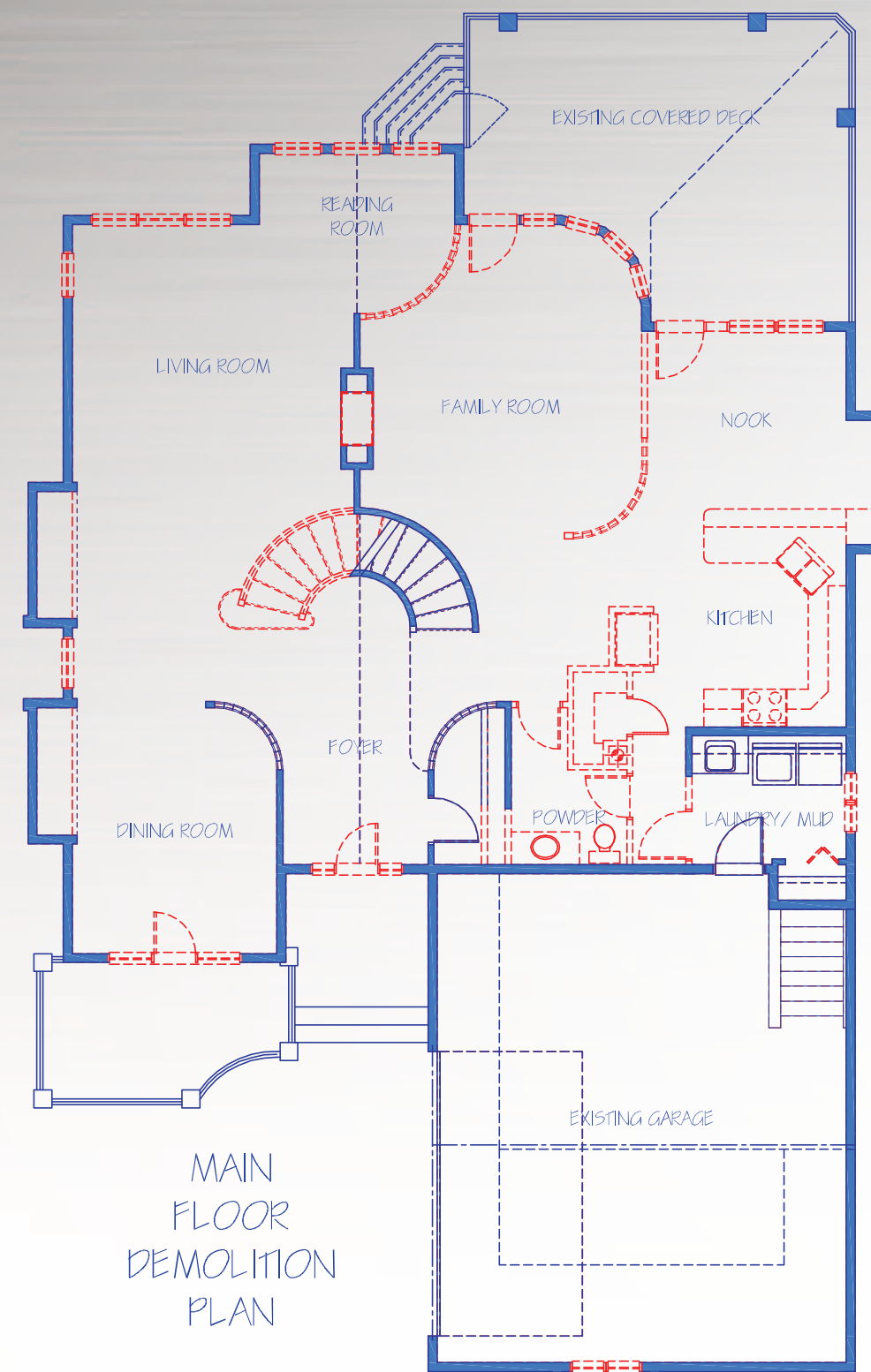
The Client had been dreaming of renovating their two storey estate home for several years and brought with them a comprehensive design binder full of inspirational ideas and images; this became the creative canvas during our extensive Client interview process. When the house was purchased over twenty years ago, the Client fell in love with the curved walls and glass tiles. The new design accentuates their favourite feature of the house, allowing them to appreciate and admire it even more; truly making their home their favourite place to be!

Criteria

- Incorporate European design influences.
- Create an impressive estate level front entrance with improved traffic flow.
- Allow a seamless transition from the kitchen, dining room and great room, conducive to entertaining large numbers of family & friends.
- Incorporate a dedicated office area.
- Update the bedrooms to reflect the personalities of the Client's grandchildren.
- Design a luxurious, European inspired master ensuite.
- Increase floor space in the master bedroom.

How Was The Criteria Met?

Essential to this design was incorporating the client's personally chosen design initiatives. These were brought to life starting with the exquisite tile inlay mosaic featured in the grand foyer. Connecting the back garage entrance to the front entrance foyer allowed for increased traffic flow and the ability to highlight the impressive stylistic design choices and the sweeping curved staircase! A spectacular gourmet kitchen featuring antiqued hand-rubbed cabinetry complimented by leathered granite countertops, a large island and finished off with a full suite of appliances by Wolf and Sub-Zero, makes entertaining large crowds both easy and more intimate. The wall between the dining room and morning room was opened and a double-sided fireplace installed to create ease of conversation. As well, by moving the dining room and connecting it to the kitchen, a dedicated office space was made available. The 2 bedrooms were painted with colors selected by the Client's grandchildren and beautifully sculptured carpeting was selected and installed in these bedrooms. One of the most dramatic changes in the home was the upscale, contemporary yet warm, cherry wood mix in the master Ensuite. The design detailing included an expansive glass separation wall to the water closet-bidet, sheik marble floors, a free standing soaker tub, and an expansive, 10mm glass enclosed steam shower. To increase the floor area of the master bedroom we integrated a credenza cabinet for the television and components. The end result was a magnificent, customized living space that better reflects the client's lifestyle needs and design inspirations at the same time highlighting the original architecturally unique features of the home.



Before Photos

